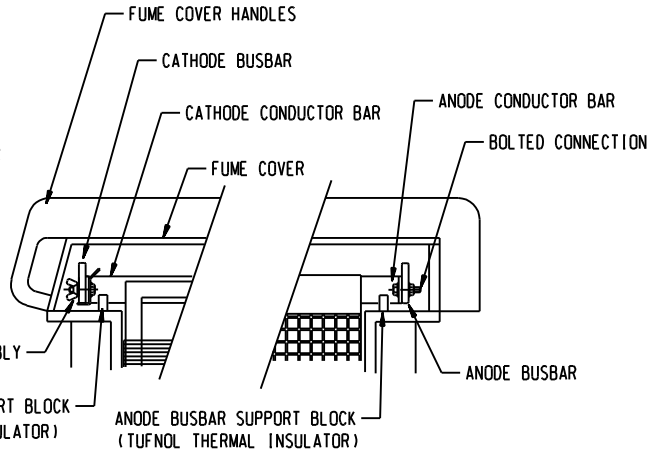
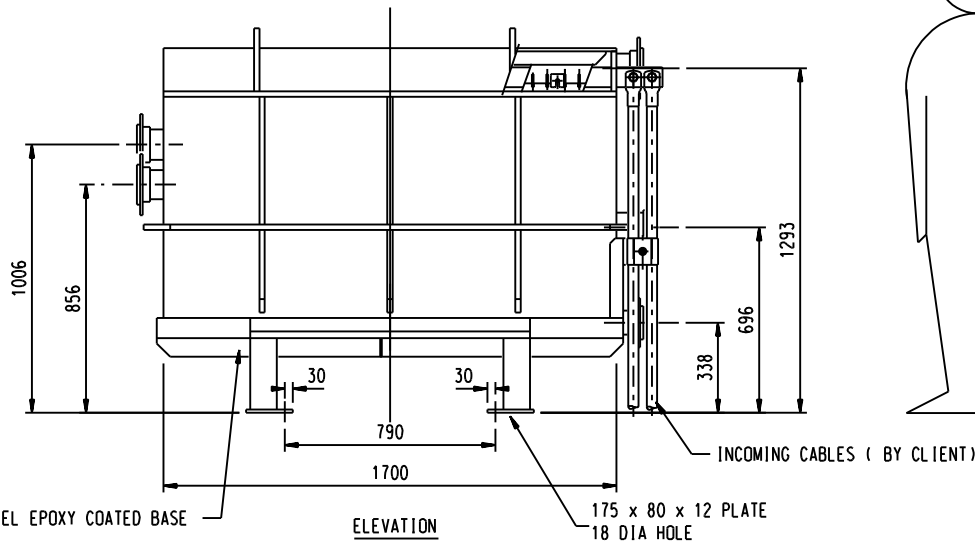


SECTION ON CENTRELINE

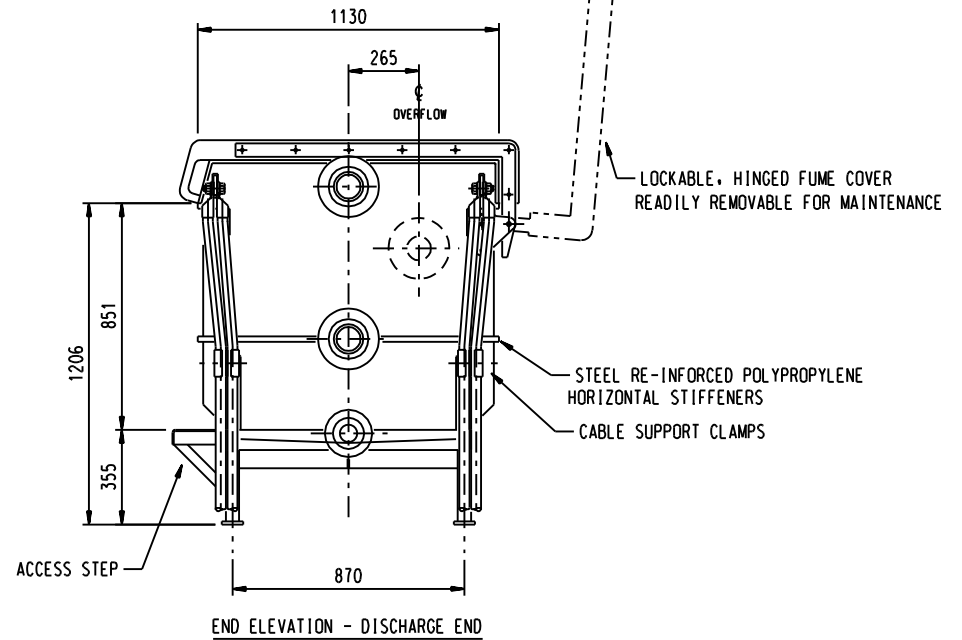


DETAIL OF CATHODE AND ANODE CONNECTIONS

- GENERAL NOTES**
- NOZZLE DETAILS:
 - INLET: 100 nb TABLE 'D' FLANGE
 - OUTLET: 100 nb TABLE 'D' FLANGE
 - FUME EXTRACTION: 100 nb TABLE 'D' FLANGE
 - OVERFLOW: 100 nb TABLE 'D' FLANGE
 - DRAIN: 90 nb TABLE 'D' FLANGE
 - TOTAL CATHODE AREA: 8.4 SQ M (12 CATHODES)
 - FUME EXTRACTION RATE REQUIRED: 1000 l/min
 - WEIGHTS:
 - EMPTY: 500 kgs
 - OPERATING: 1700 kgs
 - OPERATING LOAD PER LEG: 45 kN
 - EQUIPT No: TBA



ELEVATION



END ELEVATION - DISCHARGE END

DESIGNED		RCP		PROCESS EQUIPMENT INTERNATIONAL PTY LTD				CLIENT:	
DATE		DEC 11		Perth				PROJECT:	
DRAWN		PEI		Western Australia				ELECTROWINNING CELL - MODEL No. RPA-C84	
DATE		DEC 11		tel 0411 107 535 fax (08) 9332 6565 email info@pei.com.au www.pei.com.au				GENERAL ARRANGEMENT	
CHECKED				THIS DRAWING IS THE PROPERTY OF PROCESS EQUIPMENT INTERNATIONAL PTY LTD				SCALE	
BY (CWD)		DATE		THE ORIGIN AND ITS CONTENTS ARE CONFIDENTIAL AND SUBJECT TO RETURN ON DEMAND AND NOT BE COPIED OR DISCLOSED TO ANY THIRD PARTY OR USED DIRECTLY OR INDIRECTLY FOR ANY OTHER PURPOSE THAN AS EXPRESSLY DETERMINED IN WRITING BY PROCESS EQUIPMENT INTERNATIONAL PTY LTD				1 : 10	
				ISSUED FOR CONSTRUCTION				DRAWING NUMBER	
				BY: AUTHORIZED ONLY WHEN SIGNED				A1 - PROJ No - M - 01	
				DATE:				REV	