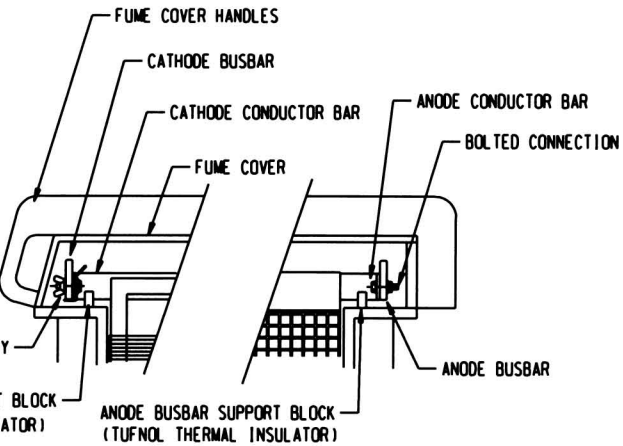
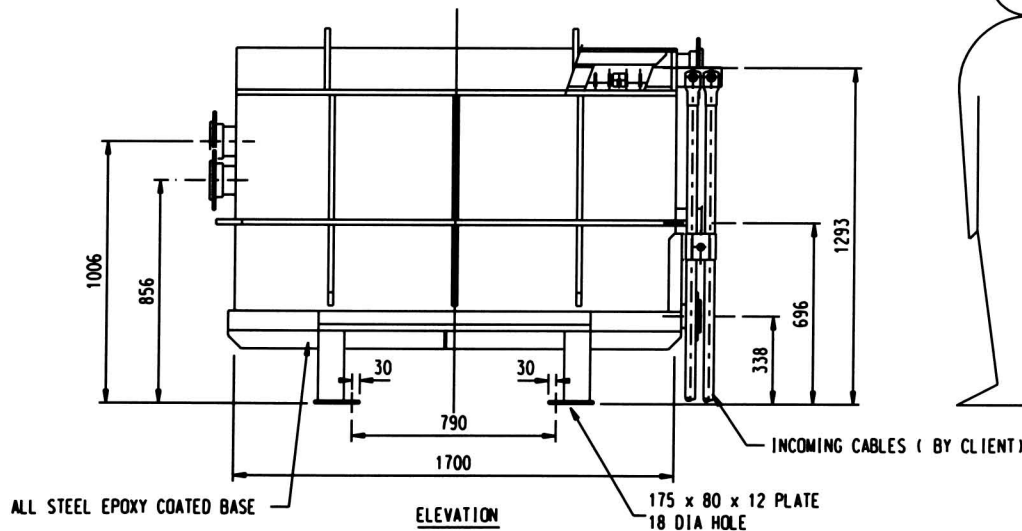


SECTION ON CENTRELINE

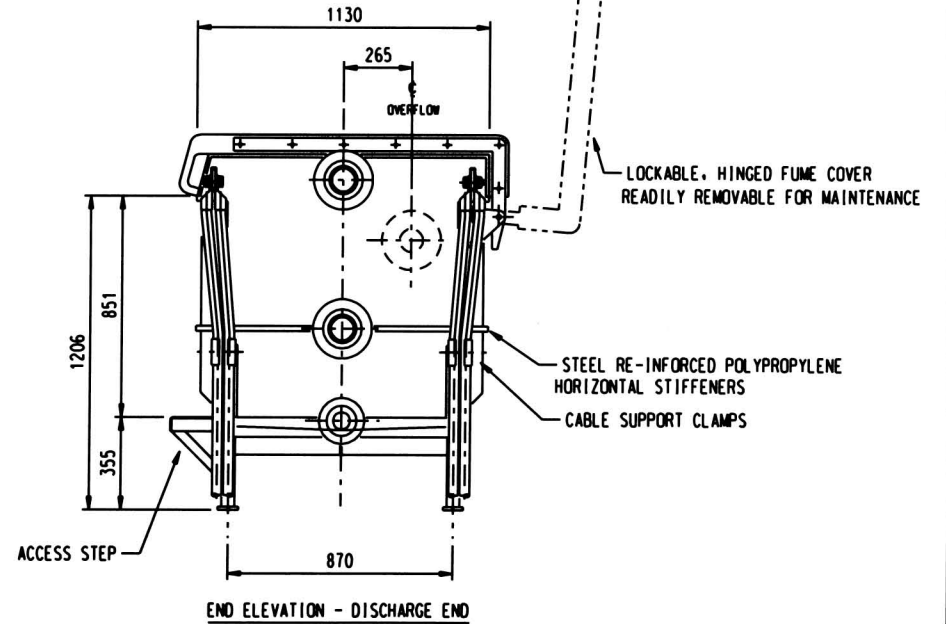


DETAIL OF CATHODE AND ANODE CONNECTIONS

- GENERAL NOTES**
- NOZZLE DETAILS:
 INLET: 100 nb TABLE 'D' FLANGE
 OUTLET: 100 nb TABLE 'D' FLANGE
 FUME EXTRACTION: 100 nb TABLE 'D' FLANGE
 OVERFLOW: 100 nb TABLE 'D' FLANGE
 DRAIN: 90 nb TABLE 'D' FLANGE
 - TOTAL CATHODE AREA: 8.4 SQ M (12 CATHODES)
 - FUME EXTRACTION RATE REQUIRED: 1000 l/min
 - WEIGHTS: EMPTY: 500 kgs
 OPERATING: 1700 kgs
 - OPERATING LOAD PER LEG: 45 kN
 - EQUIPT No: TBA



ELEVATION



END ELEVATION - DISCHARGE END

DESIGNED: [] DATE: DEC 11 DRAWN: [] DATE: DEC 11 CHECKED: [] DATE: []		PROCESS EQUIPMENT INTERNATIONAL PTY LTD Perth Western Australia Tel 0811 107 535 Fax 1081 9332 6565 email: info@pei.com.au www.pei.com.au <small>This drawing is the property of Process Equipment International Pty Ltd and shall not be used or reproduced in any form without the written consent of Process Equipment International Pty Ltd.</small>		CLIENT: [] PROJECT: [] ELECTROWINNING CELL - MODEL No. RPA-C84 GENERAL ARRANGEMENT DRAWING NUMBER: A1 - PROJ No - M - 01	
TITLE: [] DATE: [] DESCRIPTION: []		ISSUED FOR CONSTRUCTION DATE: [] SCALE: 1 : 10 SHEET: [] OF []		SHEET: [] OF []	